

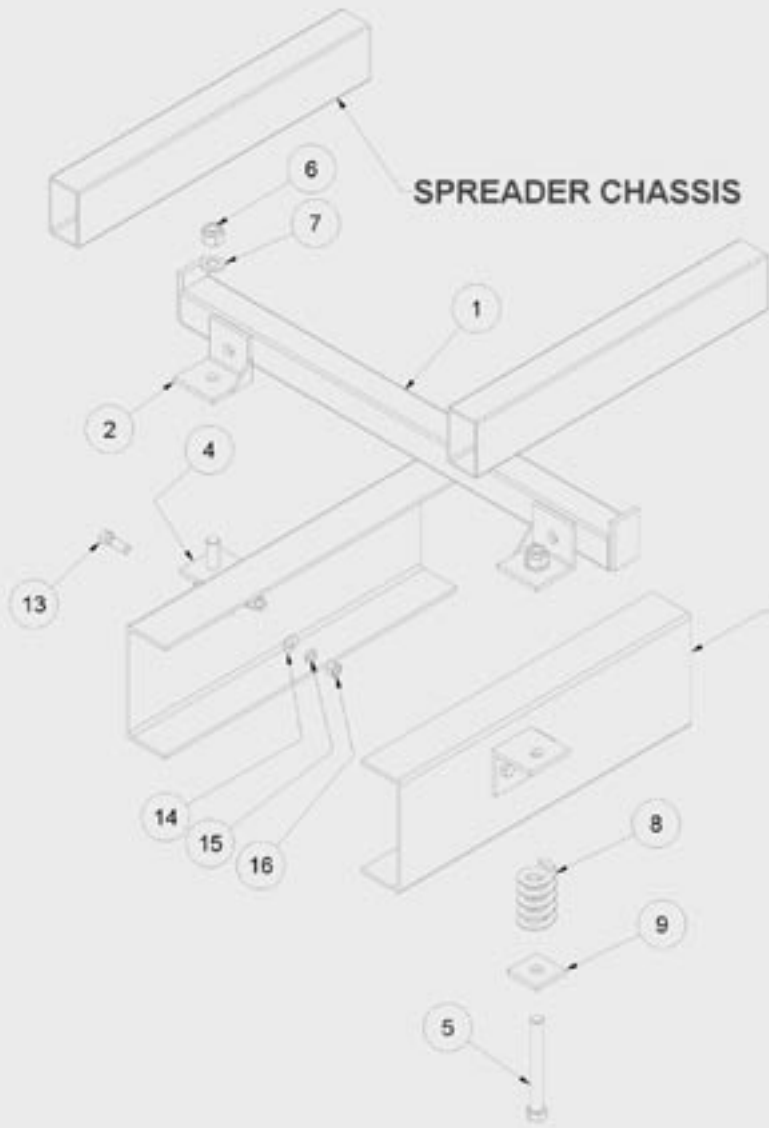
6 5 4 3 2 1

D D

C C

B B

A A



Parts List				
ITEM	QTY	PART NUMBER	DESCRIPTION	
1	1	M06-2-04-00	TM Crossmember	
2	1	M06-2-06-00	TM Mount Bracket - Upper	
4	2	M06-2-05-00	TM - Mount Bracket - Lower	
5	2	GP0-1-00-29	BOLT M24 x 200 HT UNC	
6	2	GP0-1-21-03	HEX NUT-M24-NYLOCK - C8 - ZP	
7	2	GP0-1-24-02	WASHER FLAT HIGH TENSILE -M24 ZP	
8	2	GP0-0-08-06	Spring Coil Spreader Mount	
9	2	M06-2-00-03	TM - Spring Mount Washer	
13	4	GP0-1-40-42	HEX HEAD BOLT-5/8x2"UNF HT	
14	4	GP0-1-64-05	WASHER FLAT-5/8"	
15	4	GP0-1-64-06	WASHER SPRING-5/8"x1/8x1/8-ZP	
16	4	GP0-1-61-06	HEX NUT-5/8" UNF-G8-ZP	

		DIMENSIONS IN MILLIMETERS DO NOT SCALE		Working Tolerance C = ± 0.25 UNO EE = ± 0.1 UNO G 00 = ± 0.05 UNO	Surface Finish 3.2 UNO
Date	Changes	Date	Name	Drawn	3/01/2008 matt
				Checked	
				Eng App	
				Mfg App	
				Design From	WorkInProgress
				Cost Center	
				Drawn	
				File Name	C:\temp\part000_L_R_K_00000001

©

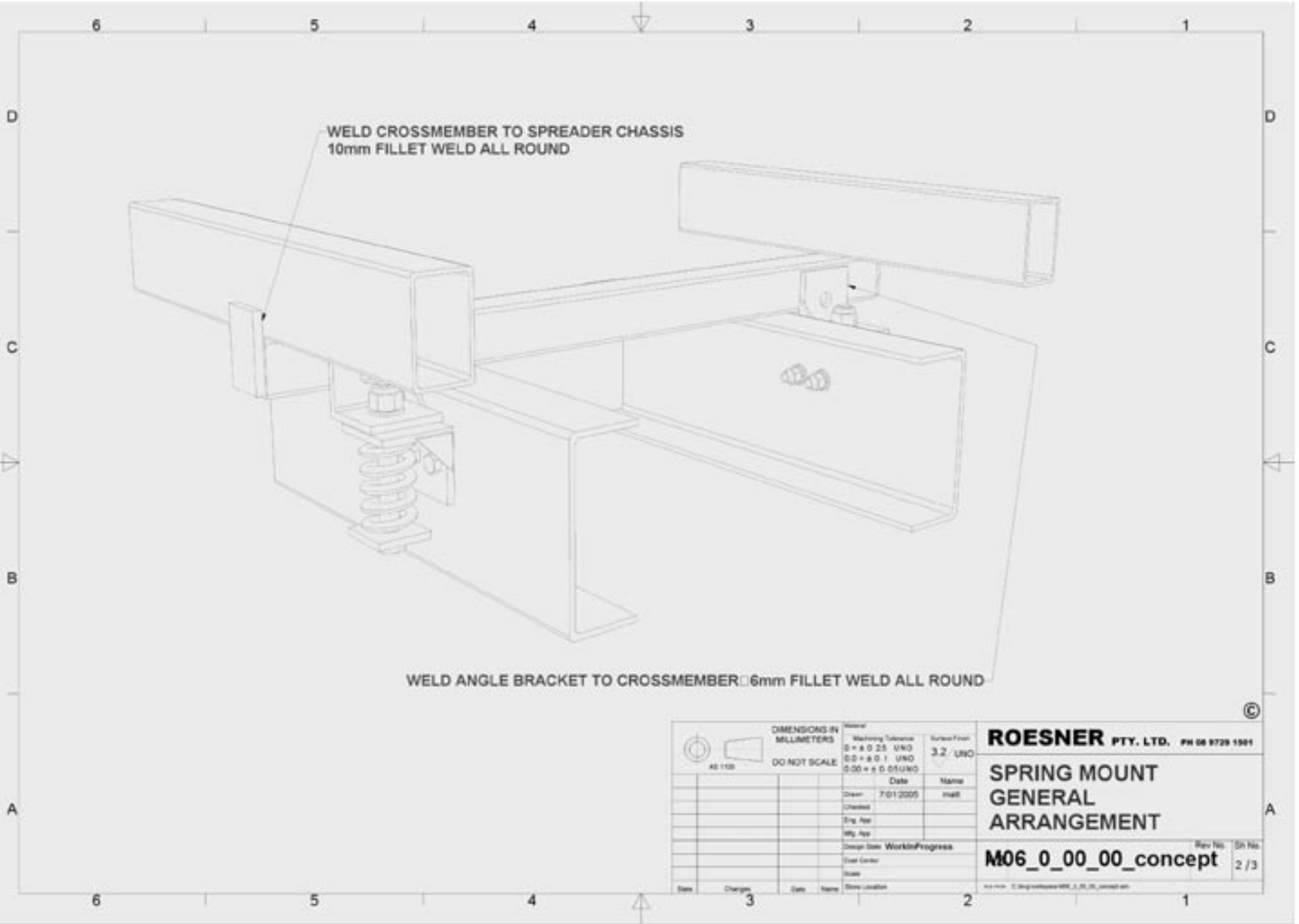
**ROESNER PTY. LTD.** PH 08 9729 1501

**TM Mounting Instructions**

**M06\_0\_00\_00\_concept**

Rev No: 01/10  
1/3

6 5 4 3 2 1



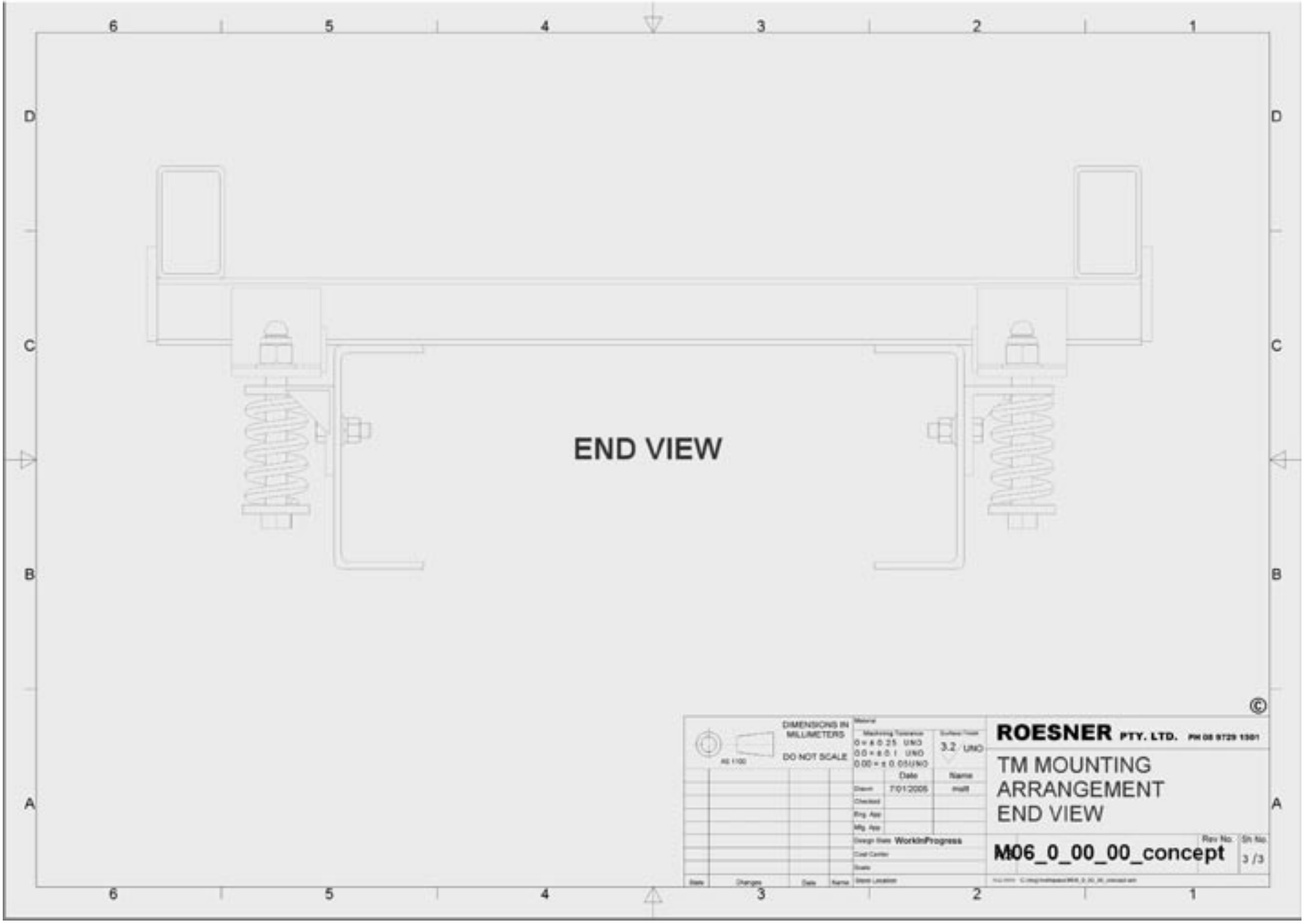
	DIMENSIONS IN MILLIMETERS	Material	Surface Finish
	DO NOT SCALE	Welding Tolerance $\varnothing = \pm 0.25$ UNO $\varnothing \varnothing = \pm 0.1$ UNO $\varnothing \varnothing \varnothing = \pm 0.05$ UNO	3.2 UNO
		Date	Name
		Drawn 7/01/2005	msk
		Checked	
		Eng. App	
		Mfg. App	
		Design Date: WorkInProgress	
		Plant Center	
		Scale	
		Draw Location	
Rev	Change	Date	Name
		3	

**ROESNER PTY. LTD.** PH 08 9729 1991


**SPRING MOUNT  
GENERAL  
ARRANGEMENT**

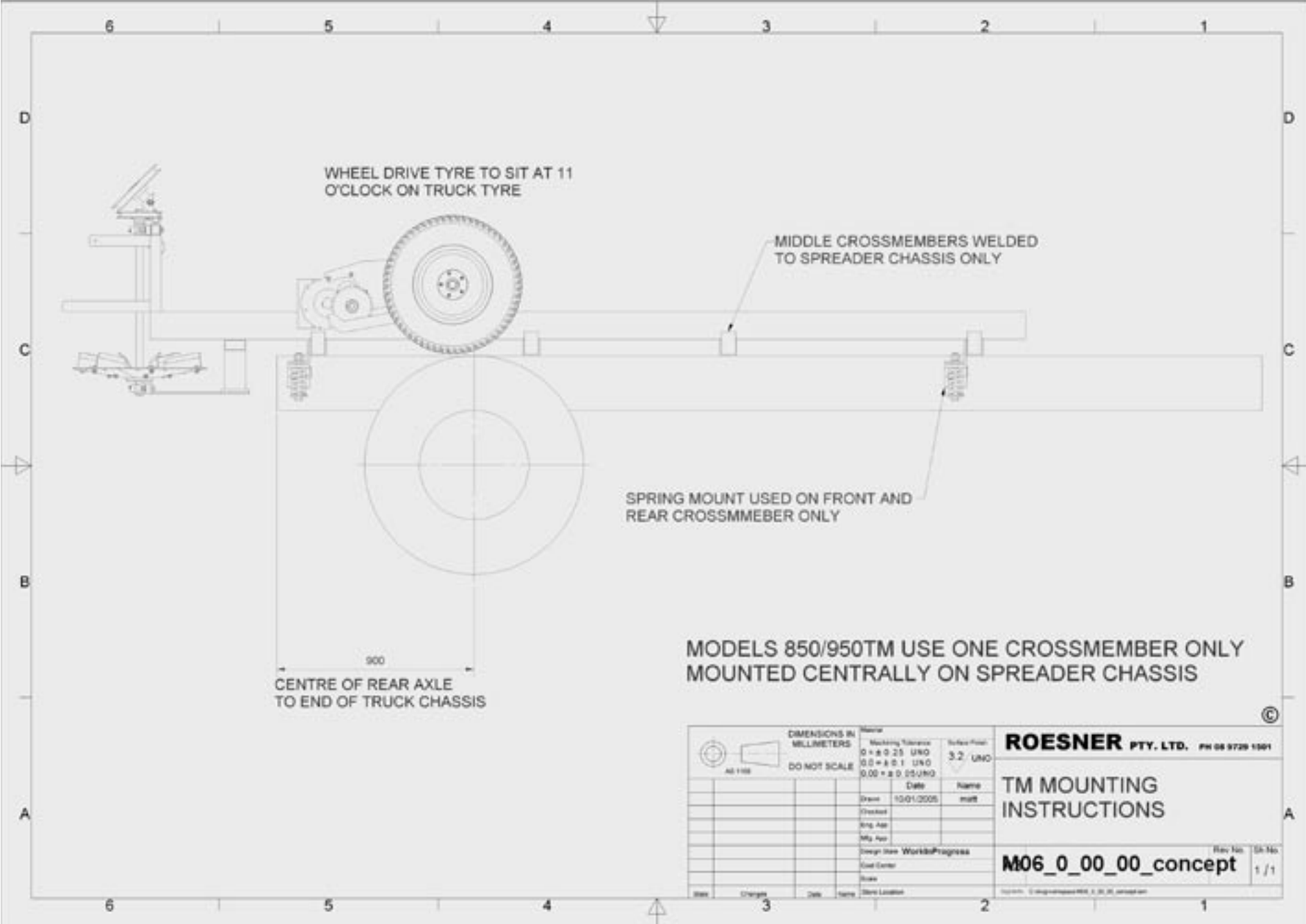
**M06\_0\_00\_00\_concept** Rev No: 2 / 3 Sh No:

© 2005 Roesner Pty Ltd. All rights reserved.



END VIEW

 AS 1100		<b>DIMENSIONS IN MILLIMETERS</b> DO NOT SCALE	Material Machining Tolerance 0 = ± 0.25 UNO 00 = ± 0.1 UNO 000 = ± 0.05 UNO	Surface Finish 3.2 UNO	<b>ROESNER PTY. LTD.</b> PH 08 9729 1391
Design Checked Eng. App. Mfg. App.	Date 7/01/2006	Name matt	<b>TM MOUNTING ARRANGEMENT</b> <b>END VIEW</b>		Rev. No. / Sh. No. <b>M06_0_00_00_concept</b> / 3 / 3
Design from: WorkInProgress Tool Center State	Date 7/01/2006	Name matt	No. 001 - Copyright © 2006 Roesner Pty. Ltd.		



WHEEL DRIVE TYRE TO SIT AT 11 O'CLOCK ON TRUCK TYRE

MIDDLE CROSSMEMBERS WELDED TO SPREADER CHASSIS ONLY

SPRING MOUNT USED ON FRONT AND REAR CROSSMEMBER ONLY

900  
CENTRE OF REAR AXLE TO END OF TRUCK CHASSIS

MODELS 850/950TM USE ONE CROSSMEMBER ONLY MOUNTED CENTRALLY ON SPREADER CHASSIS

DIMENSIONS IN MILLIMETERS		Name	
	±0.25 UNO	Surface Finish	3.2 UNO
	±0.1 UNO		
	±0.05 UNO		
DO NOT SCALE		Date	Name
		Drawn	10/01/2005
		Checked	
		Eng. App.	
		Mfg. App.	
		Design Name	WorkshopProgress
		Cost Center	
		State	
Rev	Changes	Date	Name
			Steve Laidler

ROESNER PTY. LTD. PH 08 9729 1501

TM MOUNTING INSTRUCTIONS

M06\_0\_00\_00\_concept 1/1

©

A

## TRUCK MOUNTING INSTRUCTIONS

Position the spreader so that the ground drive wheel is slightly back from the centre of the rear truck tyre (11 o'clock).

Position the spreader to avoid obstructions with fuel tanks, batteries and spring hangers.

Weld RHS crossmembers to the spreader chassis.

Weld upper mount bracket to the RHS crossmembers.

Allow 20mm between the upper and lower spring mount brackets (item 2 and item 4)

Tighten the M24 x 200 with FMS washer (item 9) so the coil spring (item 8) is under slight tension.